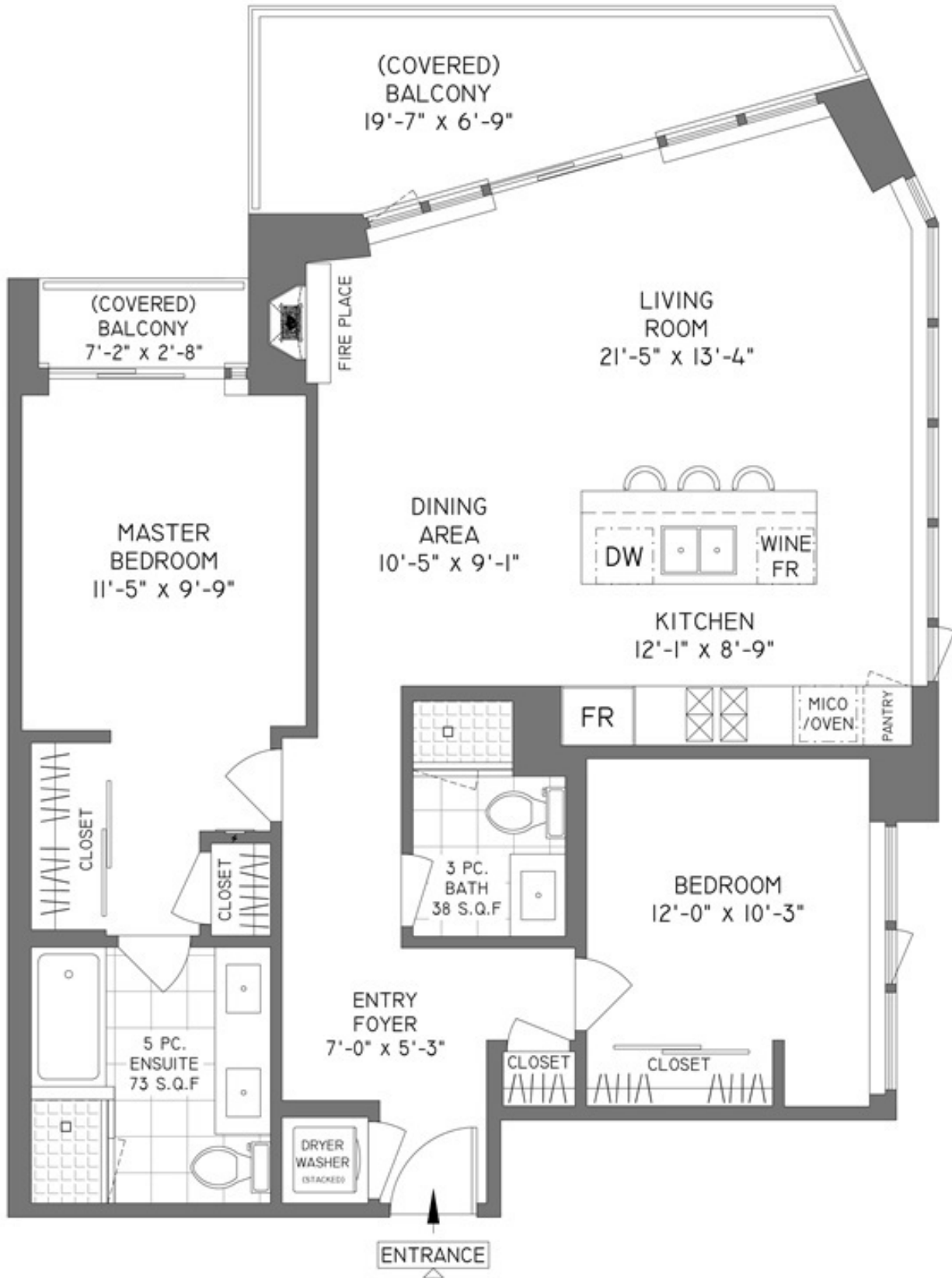




7'-5" - 9'-0" CEILING HEIGHTS



THE REPRESENTED FLOOR PLANS ARE NOT SUITABLE FOR CONSTRUCTION, ARCHITECTURAL PURPOSES. EVERY EFFORT HAS BEEN MADE TO REPRESENT ALL DIMENSIONS ACCURATELY. E&O RESERVED. FINAL SOURCE FOOTAGE MAY BE OBTAINED FROM STRATA PLAN.